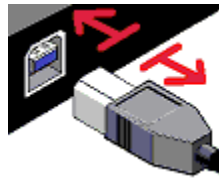


# iFlash 5.30 - Update/Install instructions

---

## Initial requirements;

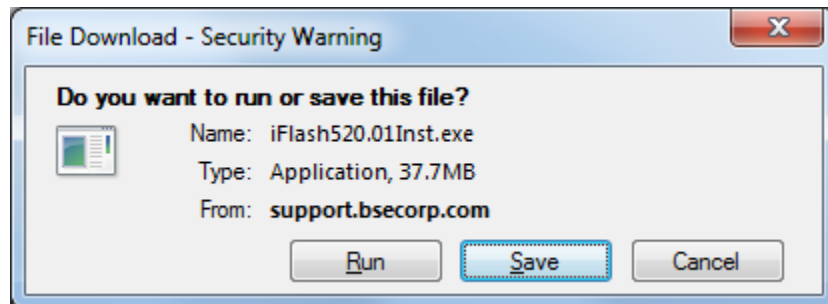
- iFlash 5.30 can be installed on any Windows XP, Vista or 7 system, either 32-bit or 64-bit.  
NOTE: If you have an existing iFlash system in place, please update iFlash on that system before installing version 5.30 on a new computer.
- You must have administrator privileges on your computer to install iFlash. See your computer administrator for more information.
- Turn off all security software including Windows Firewall.
- Unplug the USB cable from your BSE device (either the 2534 Global Programmer or Ottotest VCI) if it's plugged in.



## Download the iFlash 5.30 Setup file

You do not need to download the setup file if you have it on CD or if you clicked on Ottotest 'Update'. You can jump to part 1 "**iFlash 5.30 installation**". Otherwise download it as indicated below.

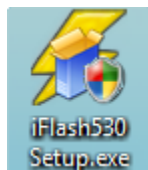
- 1- Open a web browser and go to <http://support.bsecorp.com>, then click on the blue file labelled "**iFlash530Setup.exe**".
- 2- Click "**Save**" at the prompt.
- 3- Select your **desktop** as the location to save the file, and click "**Next**".



NOTE: This installation guide is also available from the same web page, or on the iFlash CD.

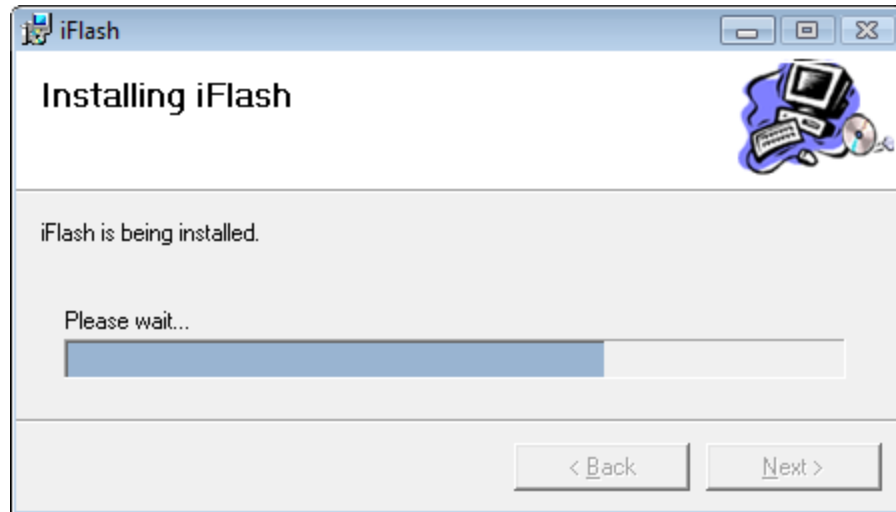
Wait for the download to complete then close all open programs, including iFlash.

Run the Setup file by double clicking on the "**iFlash530Setup.exe**" icon on your desktop.

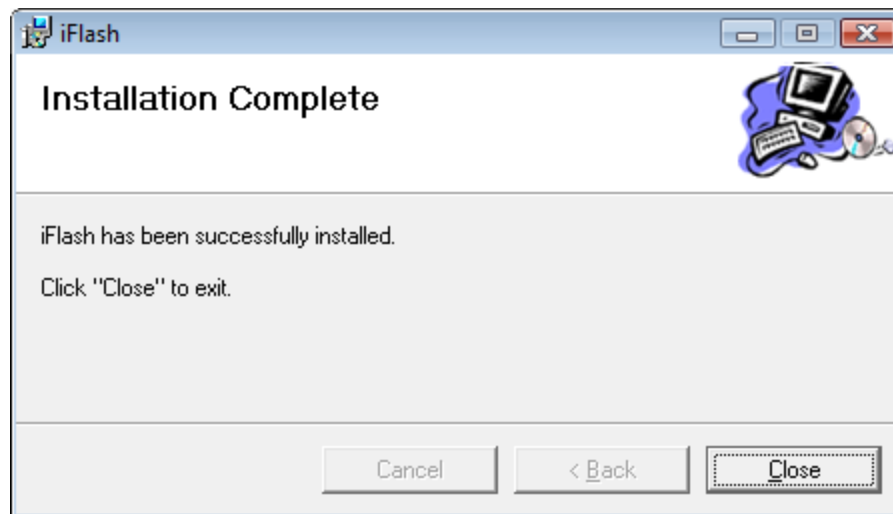




iFlash is installing.  
Wait for the “Close”  
button to appear.



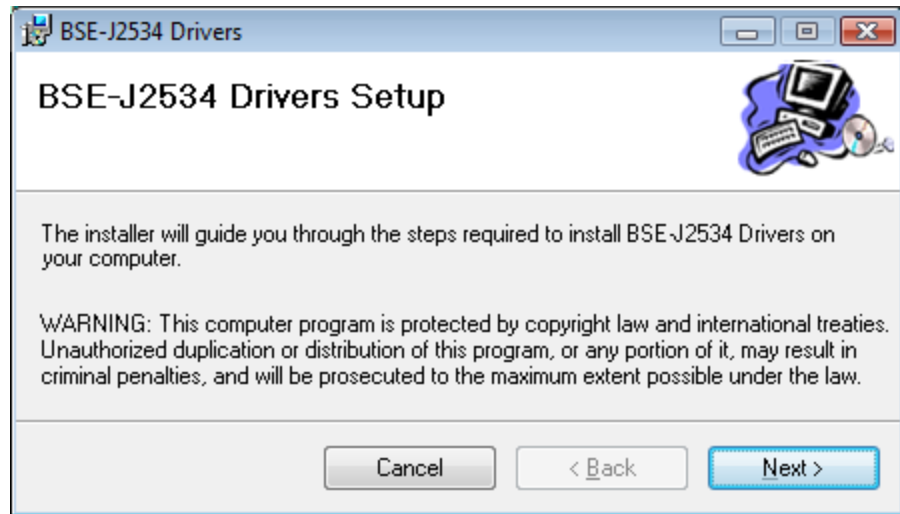
Click “Close”.



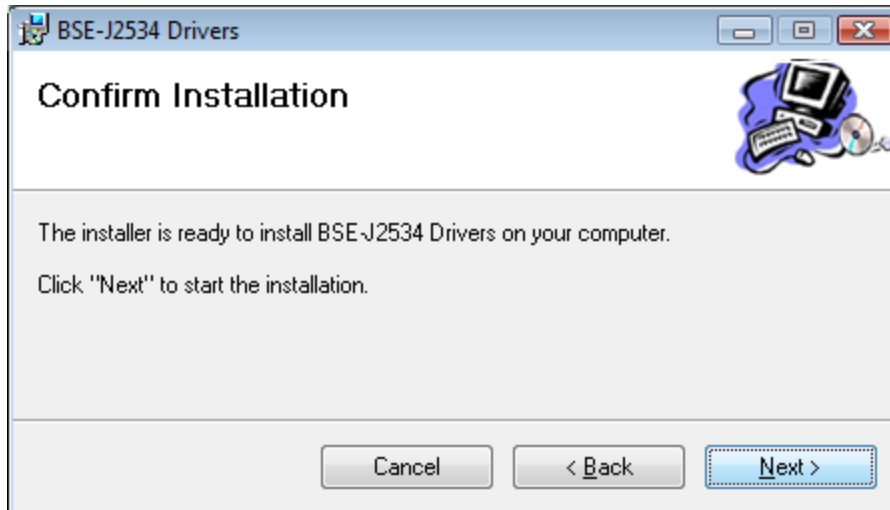
iFlash 5.30 is now installed.

## 2. USB driver installation

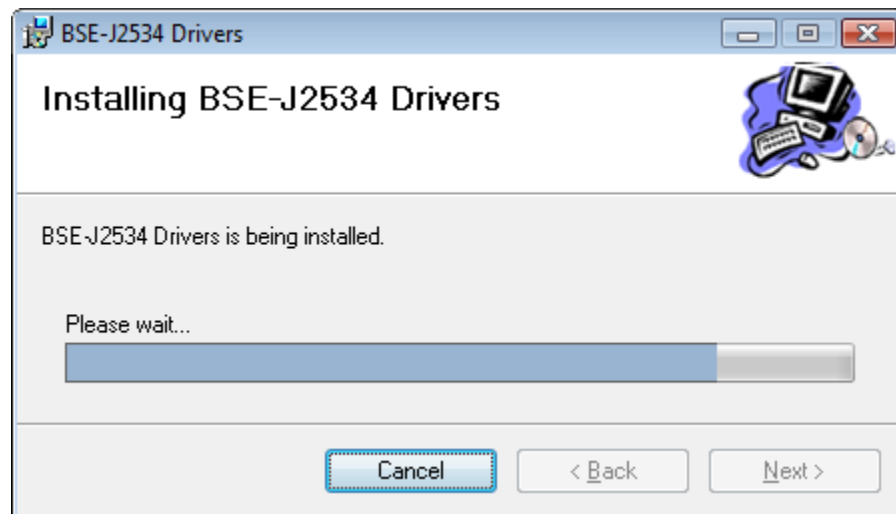
The BSE-J2534 Device Driver Setup Wizard will start. Click “**Next**”.



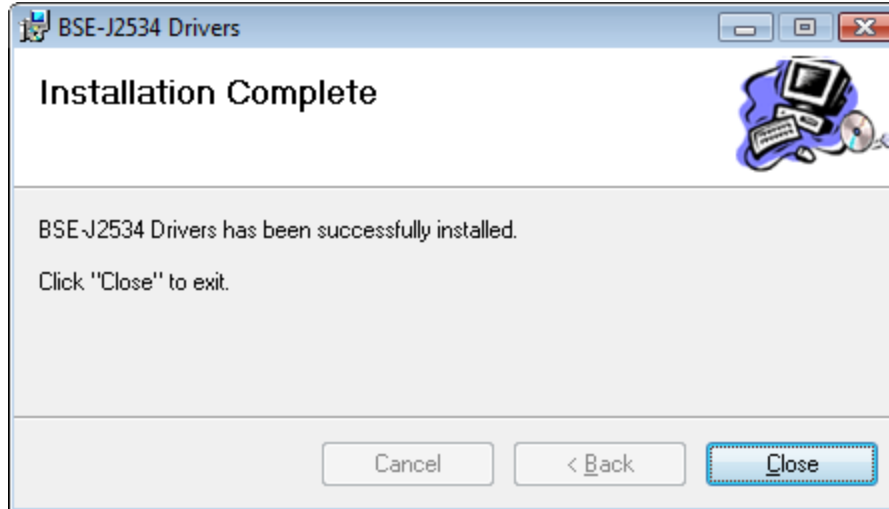
Click “**Next**” again.



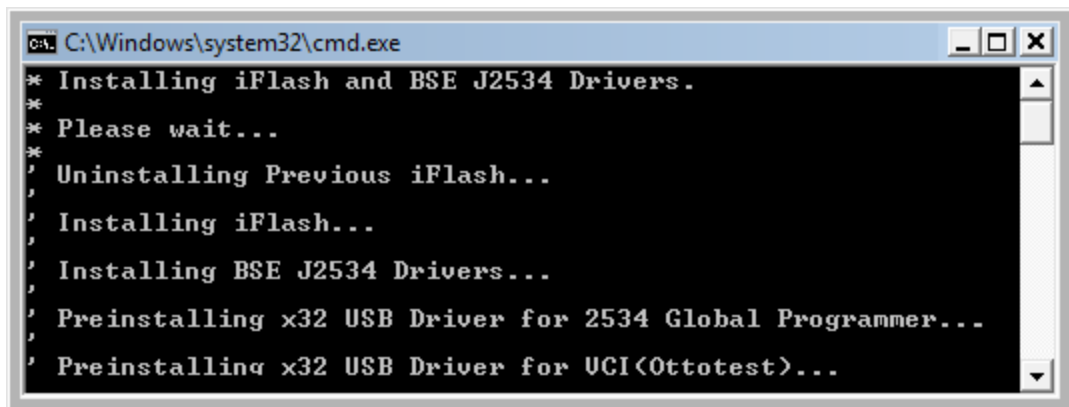
The drivers are being installed. Wait for the “Close” button to appear.



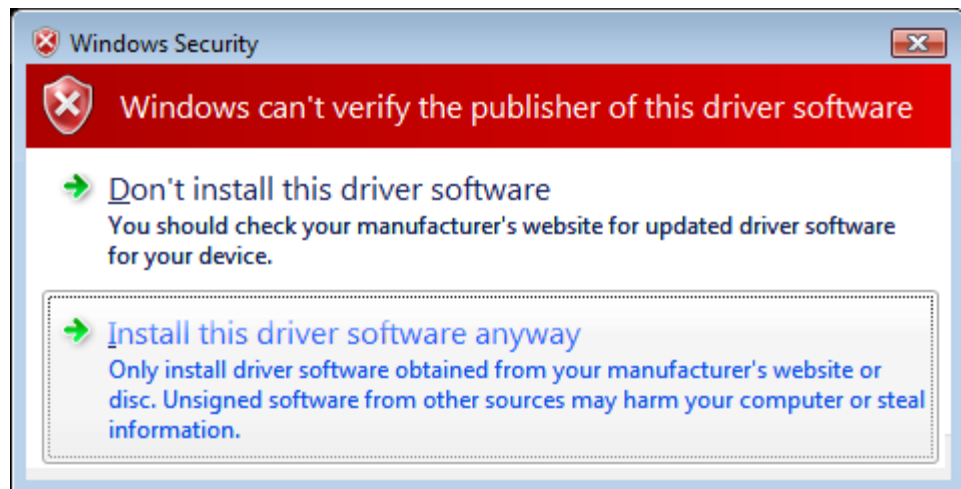
Click "Close".



The Installer will start to load the USB drivers for your version of Windows.



If you see any security warnings, click "Continue Anyway" (Win XP) or "Install this driver software anyway" (Vista and Win 7).



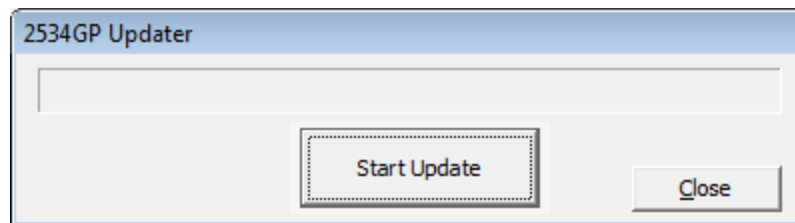
The BSE J2534 drivers are now installed.

### 3. BSE device update

The Firmware Updater will start next. Select your device in this window and click “Launch Firmware Updater”.



Click “Start Update”.



If the update can't start, the following notice will appear. Unplug the USB cable from your device then plug it in again with the power cable. The Found New Hardware Wizard may appear after a few seconds. Wait for it to appear then follow the instructions listed below to step through the Hardware Wizard screens.

Once the Hardware Wizard is complete (or if it never appears after 30 seconds) Click “OK” and then click “Start Update” again.



**NOTE:** If this notice continues to pop up, make sure the correct BSE device was selected to begin with. Also, if you're trying to install on a 64-bit Windows system then perform this installation on a 32-bit system first, then go back to the 64-bit PC and run the installation again.

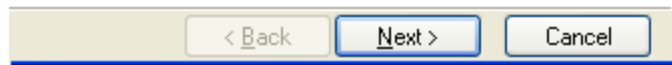
### Hardware Wizard instructions

If the Hardware Wizard asks you to connect to Windows Update, select **“No, not this time”** then click **“Next”**.

Can Windows connect to Windows Update to search for software?

- Yes, this time only
- Yes, now and every time I connect a device
- No, not this time

Click Next to continue.

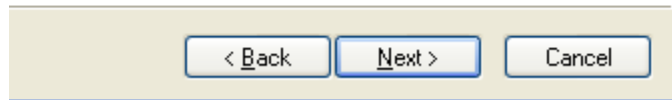


When prompted to install the driver, select **“Install the software automatically (Recommended)”** then click **“Next”**.

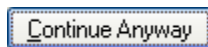
What do you want the wizard to do?

- Install the software automatically (Recommended)
- Install from a list or specific location (Advanced)

Click Next to continue.

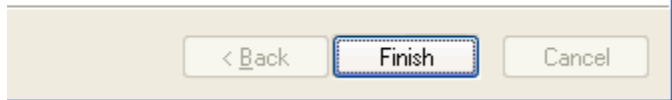


On the Hardware Installation warning window, click **“Continue Anyway”**.



When the Wizard has completed, click **“Finish”** to close it.

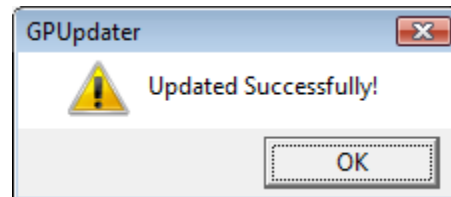
Click Finish to close the wizard.



Wait for the update to complete then click **“OK”**.

Click **“Close”** in the Updater then click **“Exit”**.

The iFlash 5.30 install process is now complete!



## 4. Starting iFlash 5.30

When you use iFlash 5.30 for the first time you will need to identify the BSE device you are using. Connect your device with the USB cable, plug in the power, then select your device and click **“OK”**.

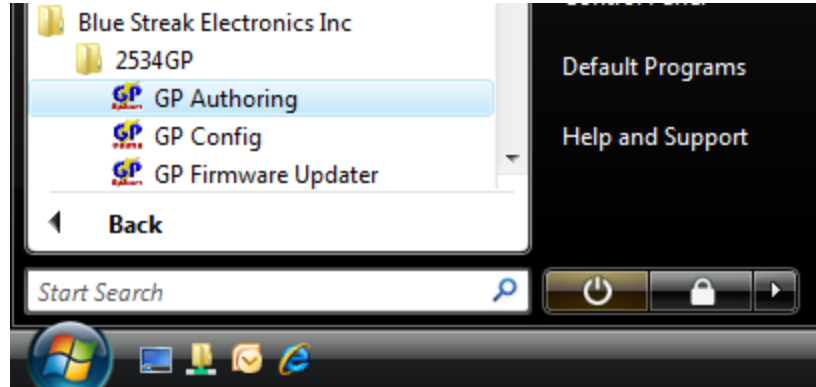


## 5. Authorize 2534 Global Programmer



- The 2534GP device only needs to be authorized if it has never been used before (new purchase only).

- To begin, go to the **Start** menu and select **All Programs**, then **Blue Streak Electronics Inc**, then **2534GP** and then click on **“GP Authoring”**.



- This will launch the 2534 Global Programmer Authoring Tool. Click **“Next”** and follow the steps below.

### 2534 Global Programmer Authoring Tool

If you have internet access select **“Internet Authorization”**, otherwise select **“Phone Authorization”** during business hours then click **“Next”**.

#### ⊙ Internet Authorization

Enter your company and contact information in the fields provided (\* are mandatory fields).

Registration Form

\* Purchased From:

\* Name:

\* Telephone #:

\* Company:

\* Address:

\* City:

\* Postal/Zip Code:

Click **“Next”** when done.

#### ⊙ Phone Authorization

Call the support line at 1-877-916-8324 (option 1) and read your ID number to the Representative.

ID: **4AY1930000000000**

Enter New Serial Number

**4AY193XAA20Y205**

Provide you company and contact info to the Rep, then enter the serial number and click **“Next”**.

Verification Code:

User Name:

Company:

Enter the verification code provided by the Rep, then type in your contact info and click **“Next”**.



Wait as the authorization completes, then click **“Exit”**.