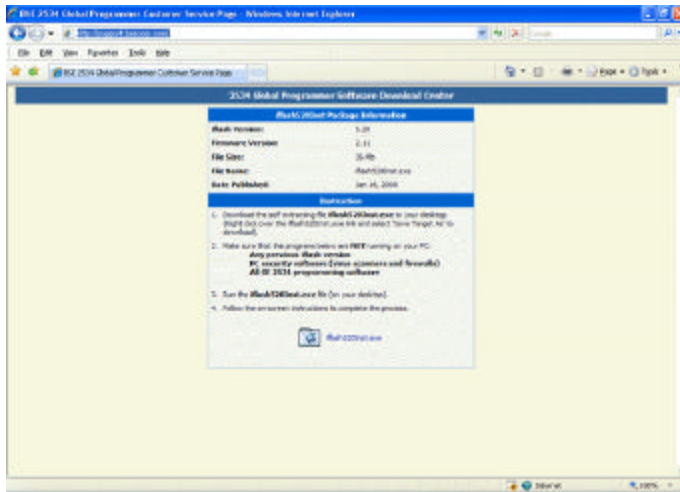


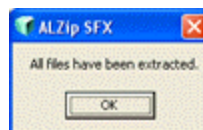
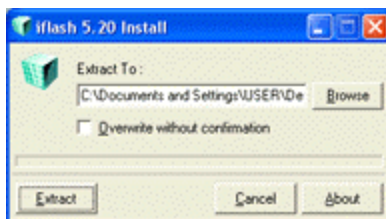
# iFlash 5.20 Installation Guide

## Pre Installation

1. Do not have any OE J2534 programming software running on your PC. Disable any firewall, virus scan and security software. Administrative rights are also required to install iflash (contact your System Administrator if you are not sure). Close all running programs, including Internet Explorer.
- 2a. Insert the iflash CD into your CD / DVD drive. The installation wizard should automatically start. If it does not, Click on the Start Menu, go to Run and enter: D:\Setup.exe (where D is the letter of your CD-ROM / DVD drive), then click OK.
- 2b. If you have downloaded the iflash software from the web (<http://support.bsecorp.com>), save and then run the iFlash520Inst.exe package.

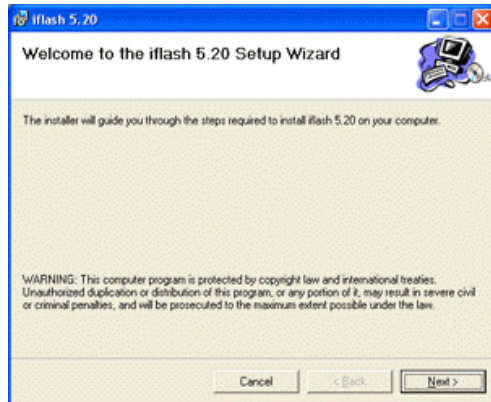


3. The file extraction screen will appear. Click the 'Extract' Button to begin and the 'OK' Button when it is complete.

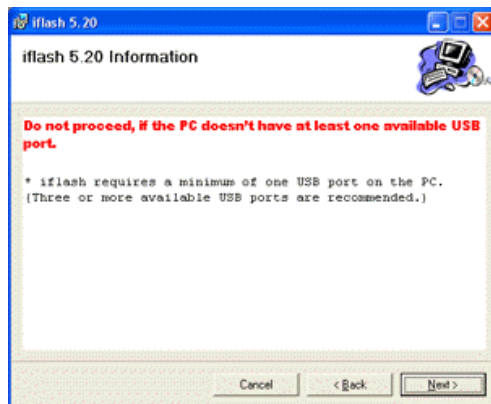


## Installation for Windows 2000/XP (see notes at end of the document for Vista)

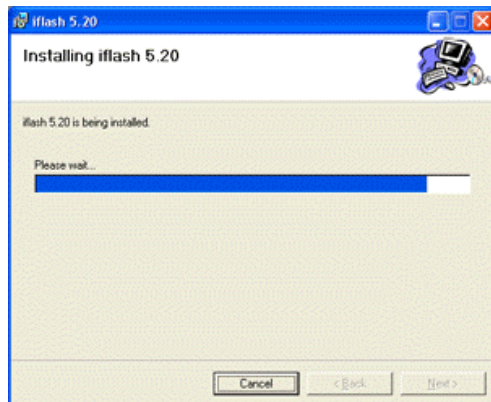
1. The initial welcome screen will appear. Click the 'Next' Button to begin.



2. A USB connection screen (most PCs and Laptops will have one free USB, check to be sure). Click the 'Next' Button when ready.

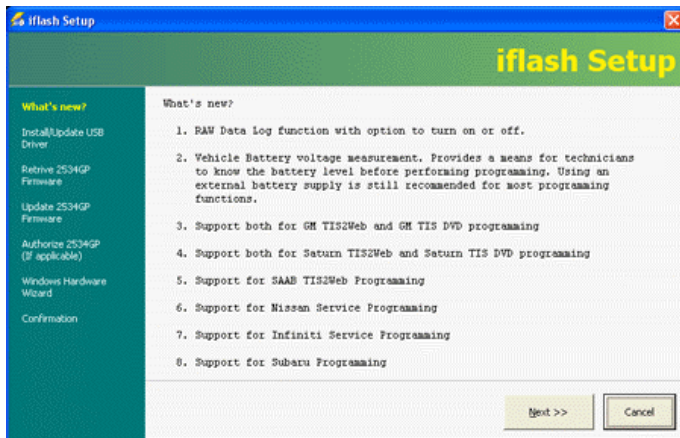


Please wait...

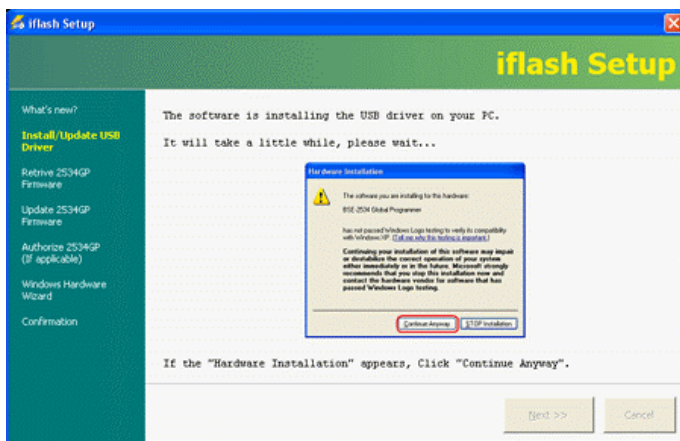




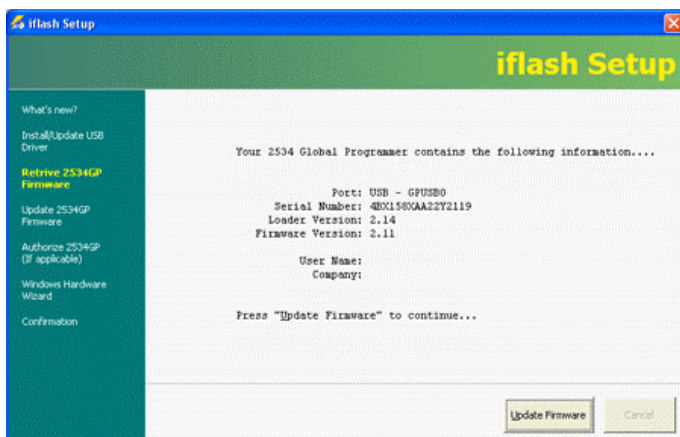
3. A summary screen of the installation process and new features for iflash 5.20. Click the 'Next' Button when ready.



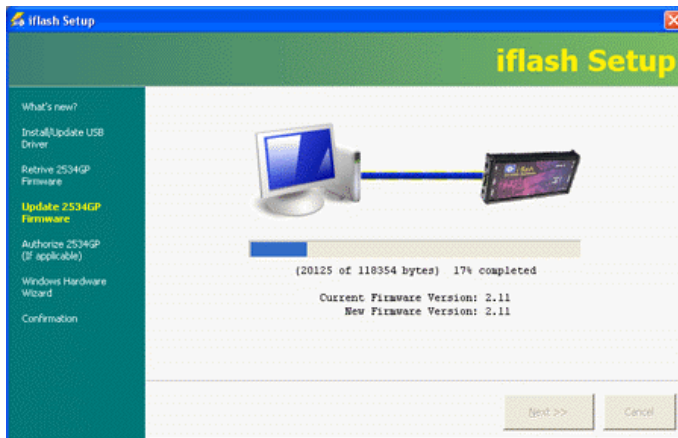
4. The USB driver is copied to your PC, follow the on screen prompts.



5. Click the 'Update Firmware' Button to upgrade the software inside your Global Programmer box (the lights will flash during the next screen).

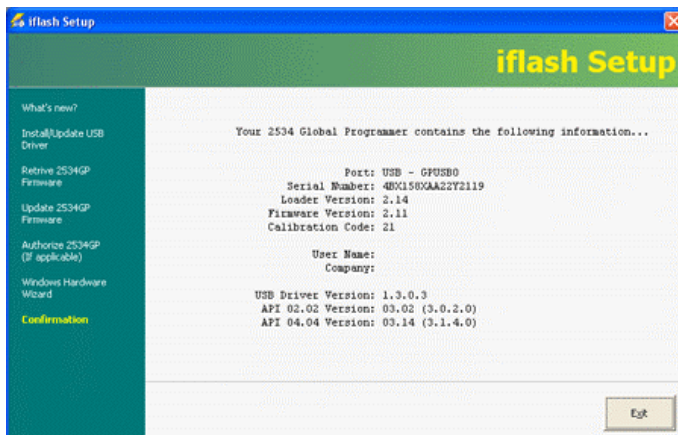


6. Please wait...

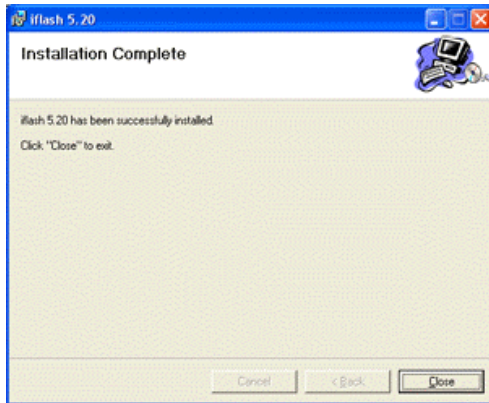


**\*\* Note:** If you are a new customer and your Global Programmer has not yet been authorized, an authorization screen will appear. Your Global Programmer can be authorized at a later time by clicking on the 'Authorization' Button within iflash. A non-authorized Global Programmer will not communicate with any ECM/PCM modules (though it will communicate with the iflash software).  
\*\*

7. The Confirmation screen: Click 'Next' to exit. (TIP: These values (if needed) can be retrieved within Iflash, simply click on the 'Version Check' Button).



8. Congratulations your installation is now complete. (Tip: Remember to install your OE specific software!).

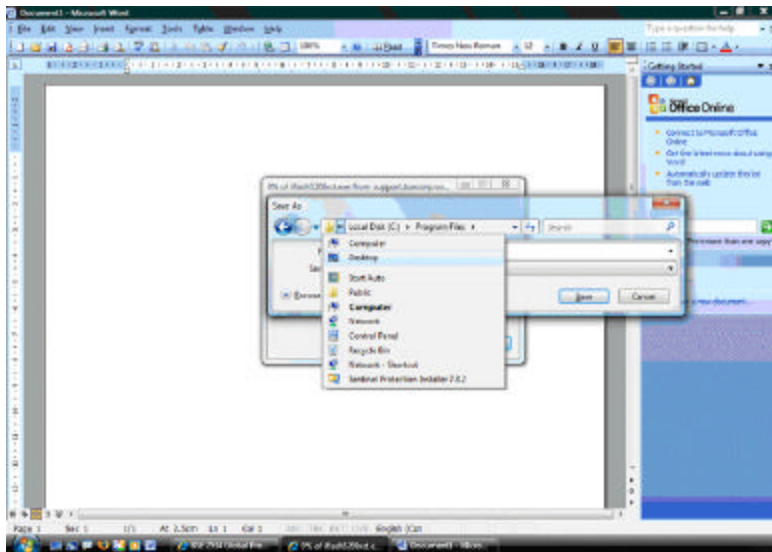


### Windows Vista Installation Notes:

iFlash 5.20 is Vista compliant, as is most but not all OE software (i.e. GM's TIS2000 DVD version cannot be used with Vista, you will need to use GM's TIS2web Internet Application. See the relevant OE FAQs within iFlash for more information).

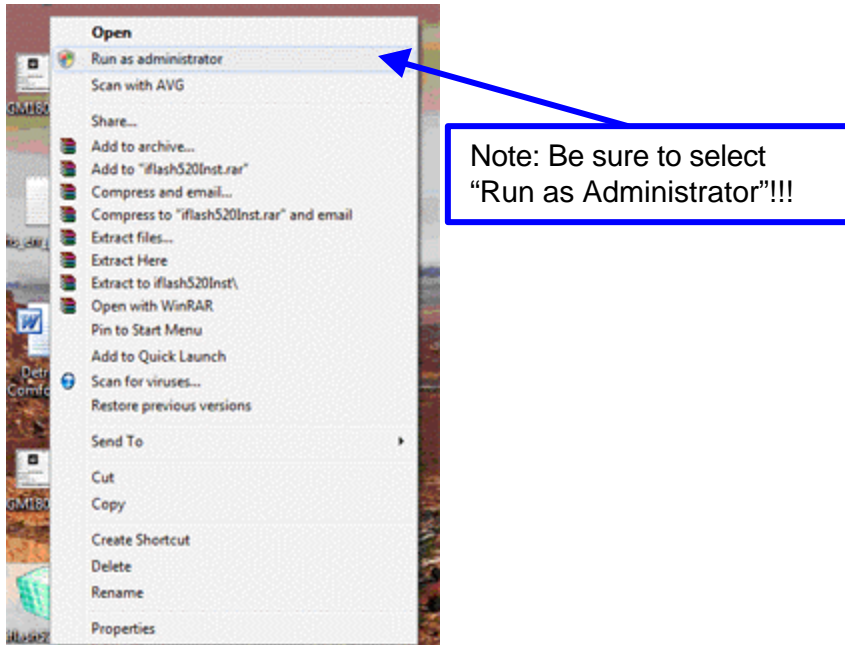
The installation process is almost the same for iFlash 5.20 on Windows Vista with the following exceptions:

1. During the Download from <http://support.bsecorp.com> : To select your desktop as the 'Save To...' location, Click on the drop down list box as shown and select the 'Desktop entry).

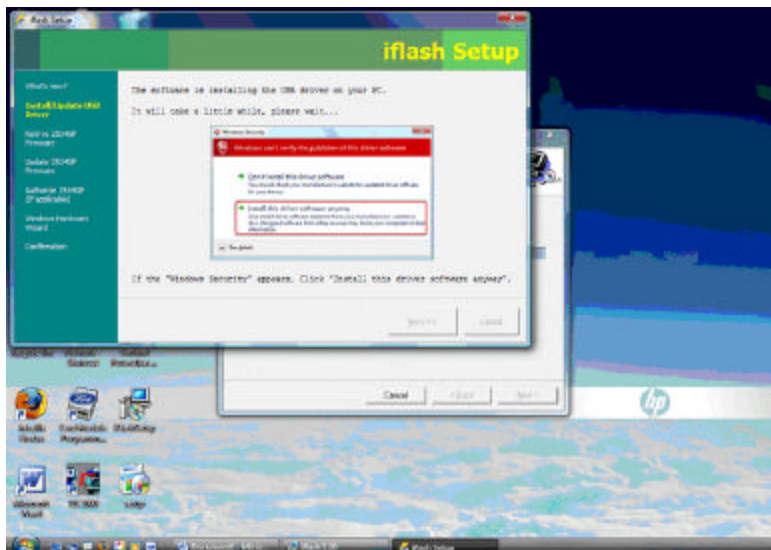


2. When you start the iflash installation process or iflash itself: A Windows 'User Account Control' window will pop up. You **must** choose the 'Allow' option. (Note most Windows Vista users should already be familiar with this window, as it will pop up frequently during normal PC operation).

3. To run the iflash520inst.exe file, you **must**: \*Right\* click over the file (icon) and select "Run as Administrator".



4. The USB driver window/installation differs on Windows Vista. Follow the on-screen prompts.





## **Additional Notes:**

In case of installation difficulties,

1. Uninstall your older iflash version if applicable.
2. Reboot your PC.
3. Ensure that all programs have been closed, and all security software is disabled.
4. Ensure that your Global Programmer is connected and powered on when prompted during the install.